

600 Grit Finish



Figure 1: 6063-T52 aluminum plate welded with ER4043 rod. Ground with 600 grit then etched with the Caustic etching solution.



Figure 2: 6061-T6511 aluminum plate welded with ER4043 rod. Ground with 600 grit then etched with the Caustic etching solution.

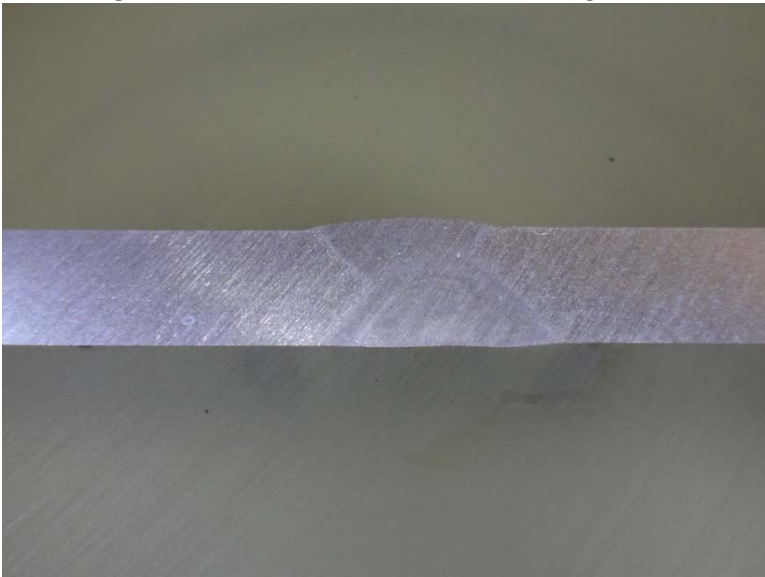


Figure 3: 5052-H32 aluminum plate welded with ER4043 rod. Ground with 600 grit then etched with the Caustic etching solution.

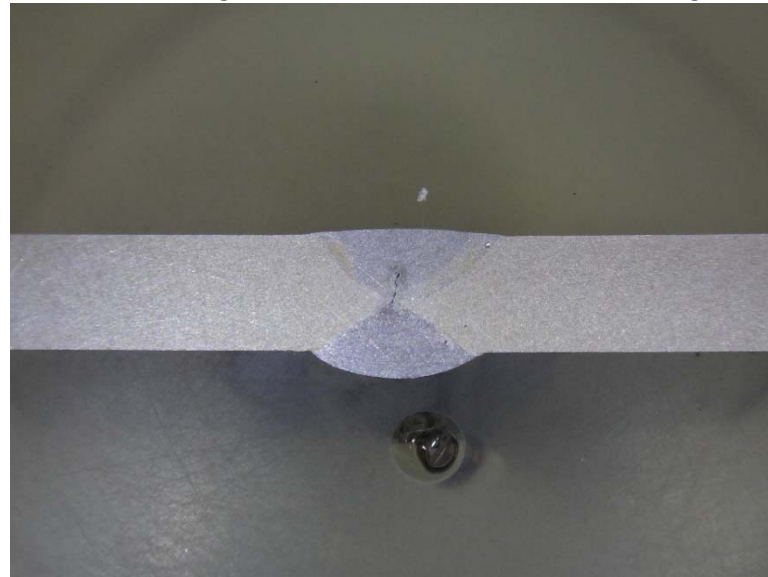


Figure 4: 3003-H14 aluminum plate welded with ER4043 rod. Ground with 600 grit then etched with the Caustic etching solution.

Mirror Polished



Figure 5: 6063-T52 aluminum plate welded with ER4043 rod. Mirror polished then etched with the Caustic etching solution.



Figure 6: 6061-T6511 aluminum plate welded with ER4043 rod. Mirror polished then etched with the Caustic etching solution.

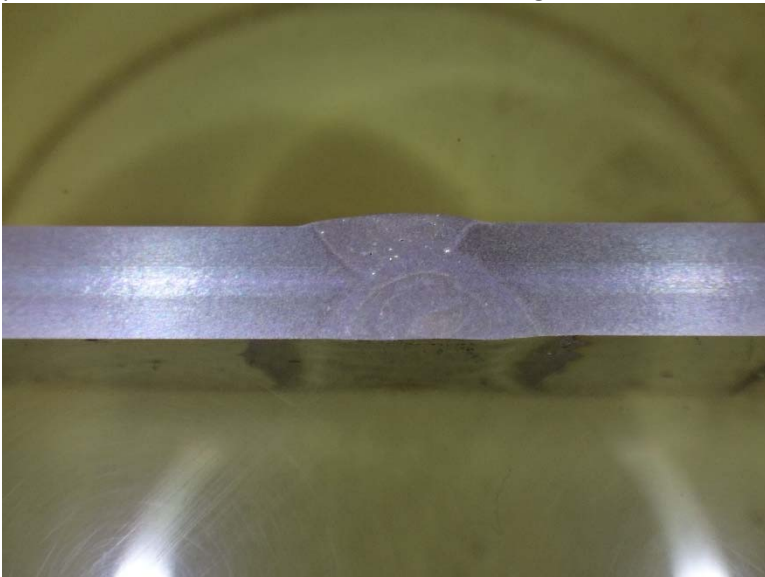


Figure 7: 5052-H32 aluminum plate welded with ER4043 rod. Mirror polished then etched with the Caustic etching solution.

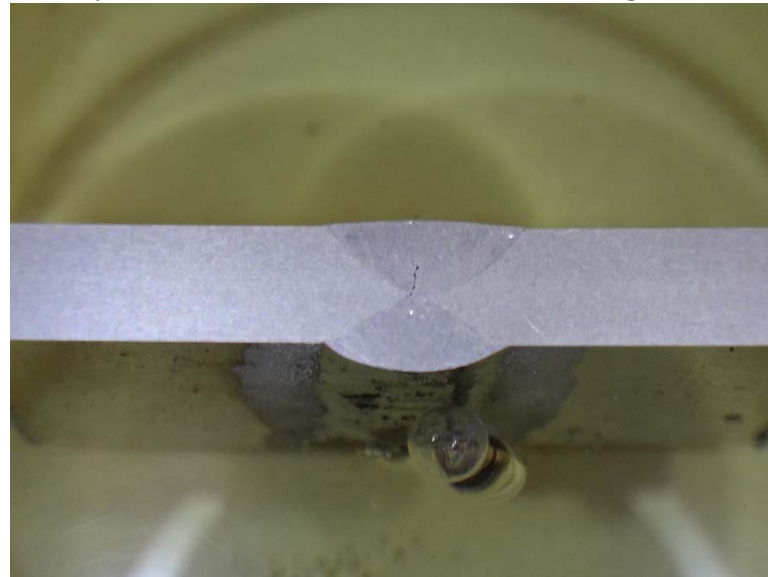


Figure 8: 3003-H14 aluminum plate welded with ER4043 rod. Mirror polished then etched with the Caustic etching solution.